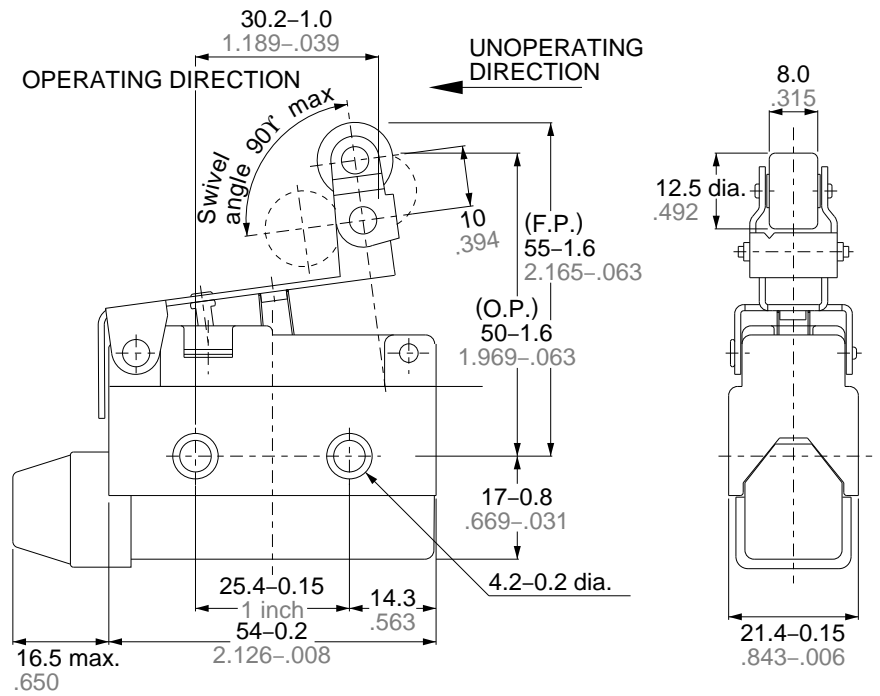


**One-way short roller lever type**

AZ7144



**STANDARDS**

| Standards | Applicable product  | Part No.                   |
|-----------|---|----------------------------|
| UL        | File No. : E-122222<br>Ratings : 10A 250V AC<br>Product type : Standard type only           | Order by standard part No. |
| CSA       | File No. : LR55880<br>Ratings : 10A 250V AC<br>Product type : Standard type only            |                            |
| TÜV       | File No. : J9551204<br>Ratings : AC-15 2A/250V onwards<br>Product type : Standard type only |                            |

**SPECIFICATIONS**

1. Contact Rating

| Rated control voltage | Load | Resistive load (cos φ=1) | Inductive load (cos φ=0.4) | Motor or lamp load |              |
|-----------------------|------|--------------------------|----------------------------|--------------------|--------------|
|                       |      |                          |                            | N.C. contact       | N.O. contact |
| 125V AC               |      | 10A                      | 6A                         | 3A                 | 1.5A         |
| 250V AC               |      | 10A                      | 4A                         | 1.5A               | 1A           |
| 115V DC               |      | 0.4A                     | 0.05A                      | —                  | —            |

2 Contact Characteristics

|  |  |                                 |
|--|--|---------------------------------|
| Contact arrangement                        | 1 Form C   |                                 |
| Initial contact resistance, max.           | 15mΩ* (By voltage drop 6 to 8V DC at rated current)  |                                 |
| Initial insulation resistance (At 500V DC) | Min. 100 MΩ  |                                 |
| Initial breakdown voltage                  | 1,500 Vrms for 1 min Between non-consecutive terminals<br>2,000 Vrms for 1 min Between dead metal parts and each terminal<br>2,000 Vrms for 1 min Between ground and each terminal |                                 |
| Shock resistance                           | In the free position   | Max. 98m/s <sup>2</sup> {10G}   |
|  | In the full operating position   | Max. 294m/s <sup>2</sup> {30G}  |
| Vibration resistance                       | 55 Hz, double amplitude of 1.5 mm  |                                 |
| Expected life (Min. operation)             | Mechanical   | 10 <sup>7</sup> (at 50 cpm)     |
|  | Electrical   | 2 x 10 <sup>5</sup> (at 20 cpm) |
| Ambient temperature/Ambient humidity       | -20 to +60°C -4 to +140°F /Max. 95% R.H. (at 20°C 68°F)  |                                 |
| Max. operating speed                       | 120 cpm  |                                 |

\*The resistance of a copper wire is not included.

3.EN60947-5-1 performance

| Item                                   | Rating        |
|--|---------------|
| Rated insulation voltage (Ui)          | 250VAC        |
| Rated impulse withstand voltage (Uimp) | 2.5kV         |
| Switching over voltage                 | 2.5kV         |
| Rated enclosed thermal current (Ithe)  | 10A           |
| Conditional short-circuit current      | 100A          |
| Short-circuit protection device        | 10A fuse      |
| Protective construction                | IP64 (switch) |
| Pollution degree                       | 3             |

**DATA**

1. Life curve

